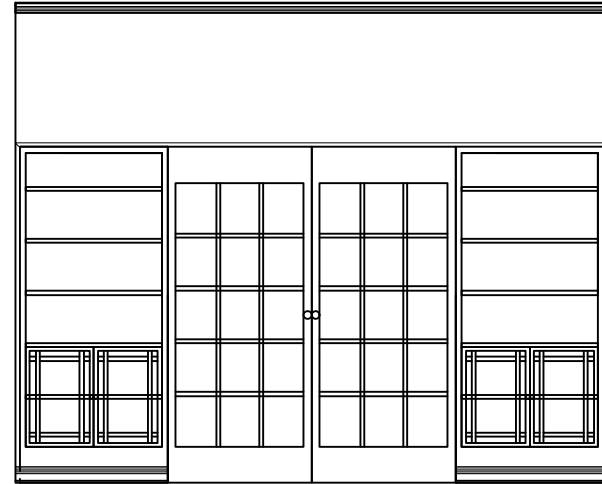




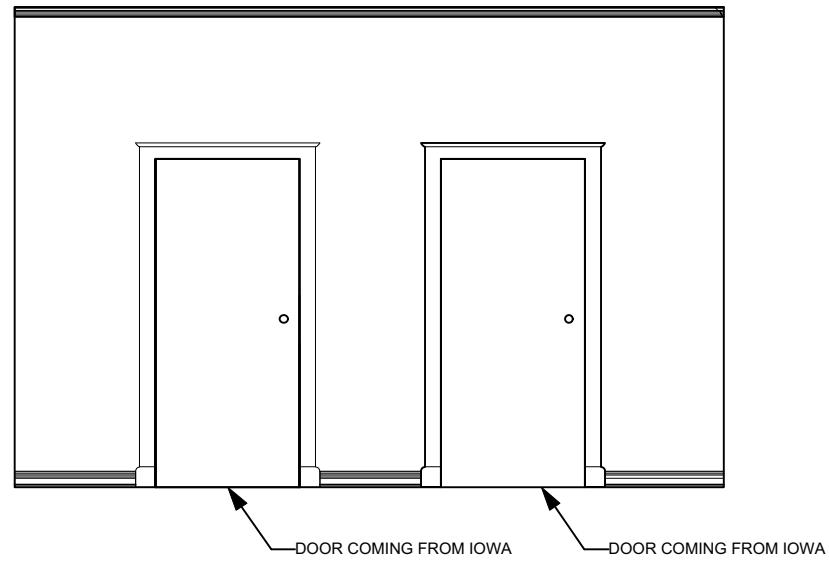
THE CALL - EXTERIOR WALL  
UPDATED 11.02.15  
DIR. A. MORTON  
DES. S. NEWPORT  
TD. D. MUELLER  
DRAFTED BY. T. RANKIN  
1/2" = 1'-0"



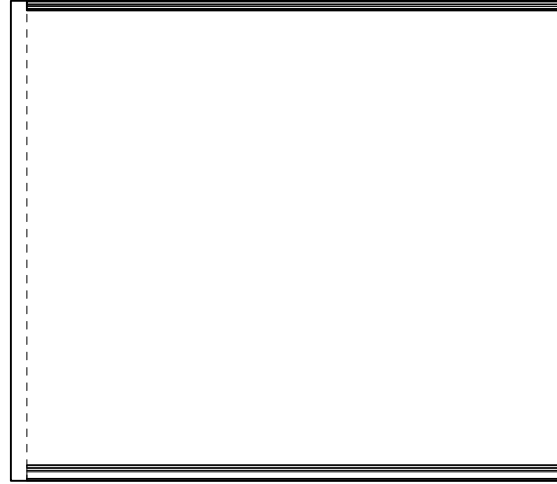
THE CALL - HALL LEFT WALL  
UPDATED 11.02.15  
DIR. A. MORTON  
DES. S. NEWPORT  
TD. D. MUELLER  
DRAFTED BY. T. RANKIN  
1/2" = 1'-0"



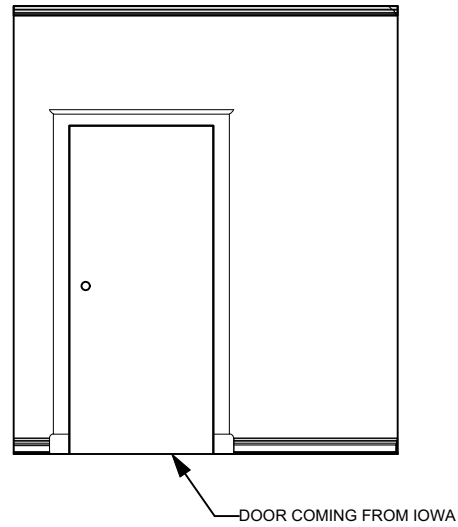
THE CALL - BABY'S ENTRANCE WALL  
UPDATED 11.02.15  
DIR. A. MORTON  
DES. S. NEWPORT  
TD. D. MUELLER  
DRAFTED BY. T. RANKIN  
1/2" = 1'-0"



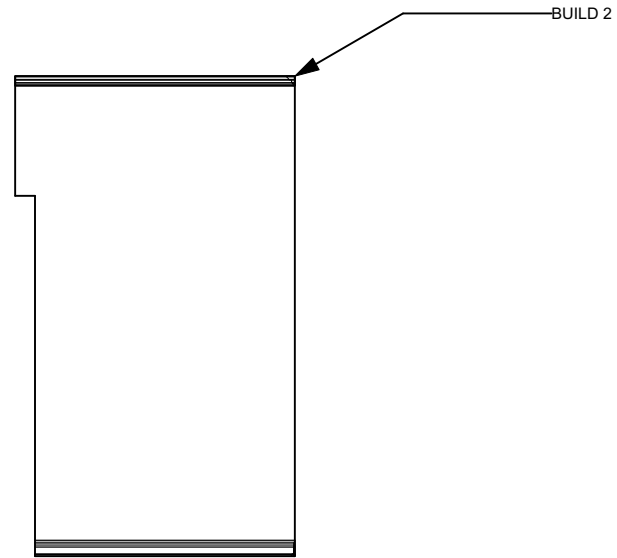
THE CALL - HALL RIGHT WALL  
UPDATED 11.02.15  
DIR. A. MORTON  
DES. S. NEWPORT  
TD. D. MUELLER  
DRAFTED BY. T. RANKIN  
1/2" = 1'-0"



THE CALL - KITCHEN WALL  
UPDATED 11.02.15  
DIR. A. MORTON  
DES. S. NEWPORT  
TD. D. MUELLER  
DRAFTED BY. T. RANKIN  
1/2" = 1'-0"

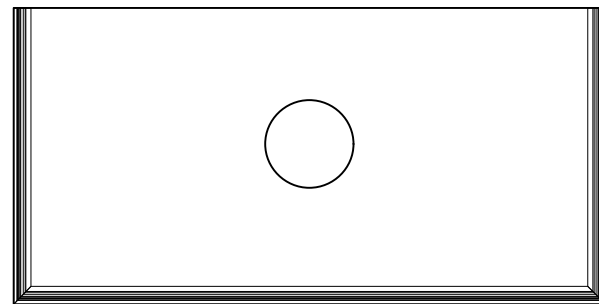


THE CALL - ENTRANCE WALL  
UPDATED 11.02.15  
DIR. A. MORTON  
DES. S. NEWPORT  
TD. D. MUELLER  
DRAFTED BY. T. RANKIN  
1/2" = 1'-0"

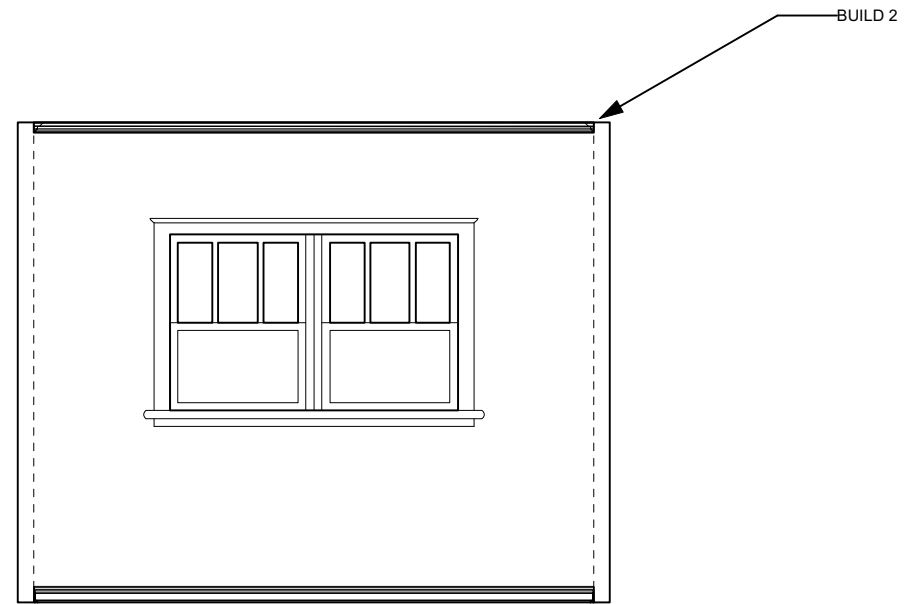


THE CALL - BABY SIDE WALLS  
UPDATED 11.02.15  
DIR. A. MORTON  
DES. S. NEWPORT  
TD. D. MUELLER  
DRAFTED BY. T. RANKIN  
1/2" = 1'-0"

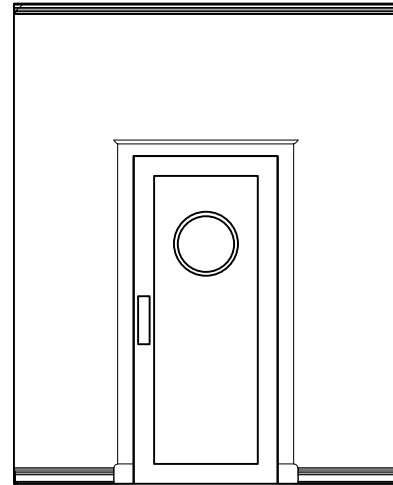




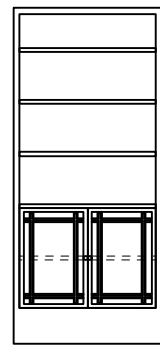
THE CALL - BABY ROOM OVER HANG  
UPDATED 11.02.15  
DIR. A. MORTON  
DES. S. NEWPORT  
TD. D. MUELLER  
DRAFTED BY. T. RANKIN  
1/2" = 1'-0"



THE CALL - BABY BACK WALLS  
UPDATED 11.02.15  
DIR. A. MORTON  
DES. S. NEWPORT  
TD. D. MUELLER  
DRAFTED BY. T. RANKIN  
1/2" = 1'-0"



THE CALL - KITCHEN ENTRANCE WALL  
UPDATED 11.02.15  
DIR. A. MORTON  
DES. S. NEWPORT  
TD. D. MUELLER  
DRAFTED BY. T. RANKIN  
1/2" = 1'-0"



BUILD 2

THE CALL - BOOKCASE  
UPDATED 11.02.15  
DIR. A. MORTON  
DES. S. NEWPORT  
TD. D. MUELLER  
DRAFTED BY. T. RANKIN  
1/2" = 1'-0"